

# Assembling your new wind turbine

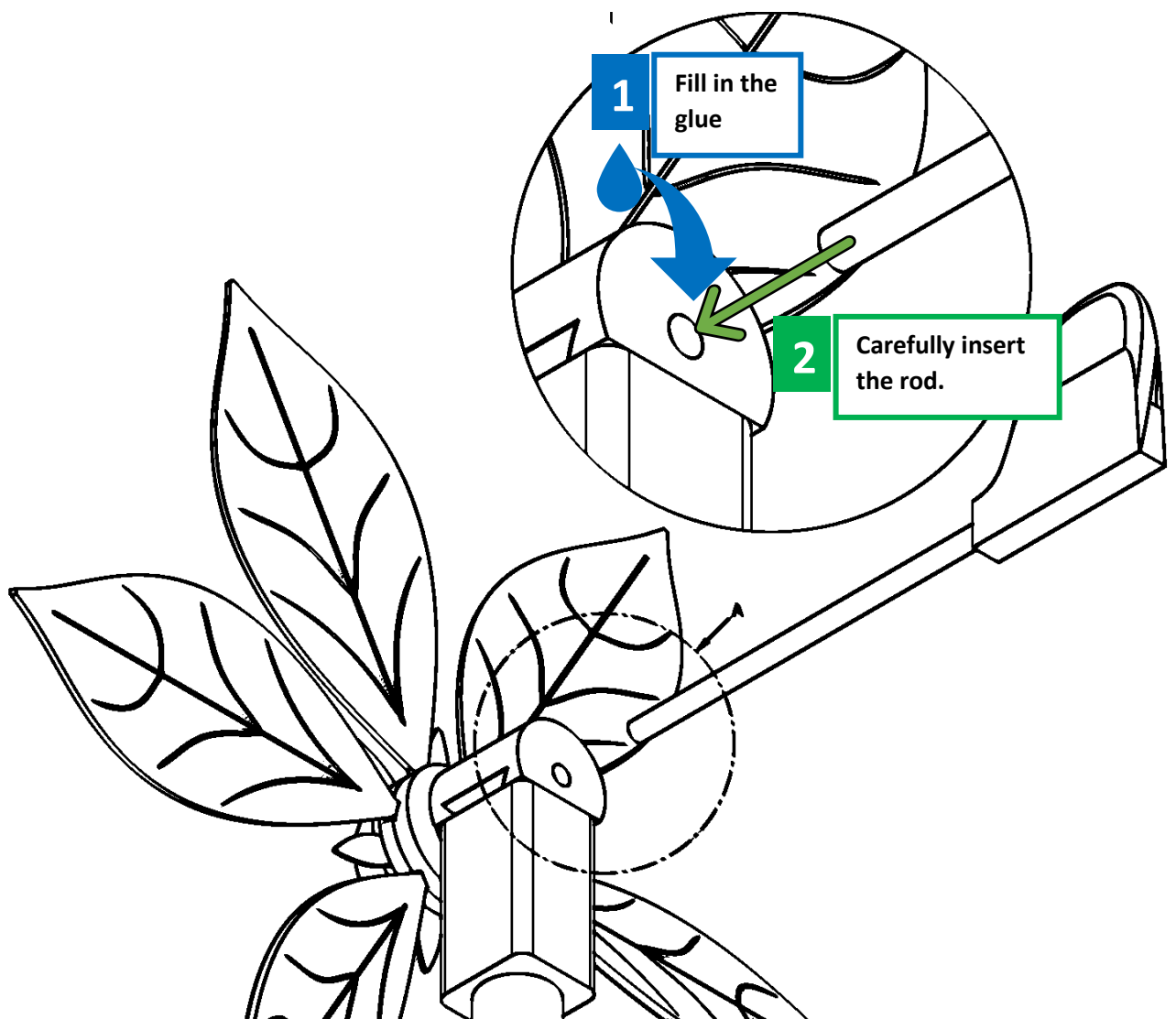
We will not ship your wind turbine completely assembled. This saves you and us shipping costs and shipping materials.

All you need is a little glue to assemble.

## Step 1

Connection of the fin with the wind turbine. We have already connected the fin to the required wooden stick here. 1. Pour some glue into the opening. 2. Now carefully insert the wooden stick into the opening about 1.5-2 cm as shown in the drawing and align the fin vertically upwards.

**Allow the glue to dry for 24 hours.**

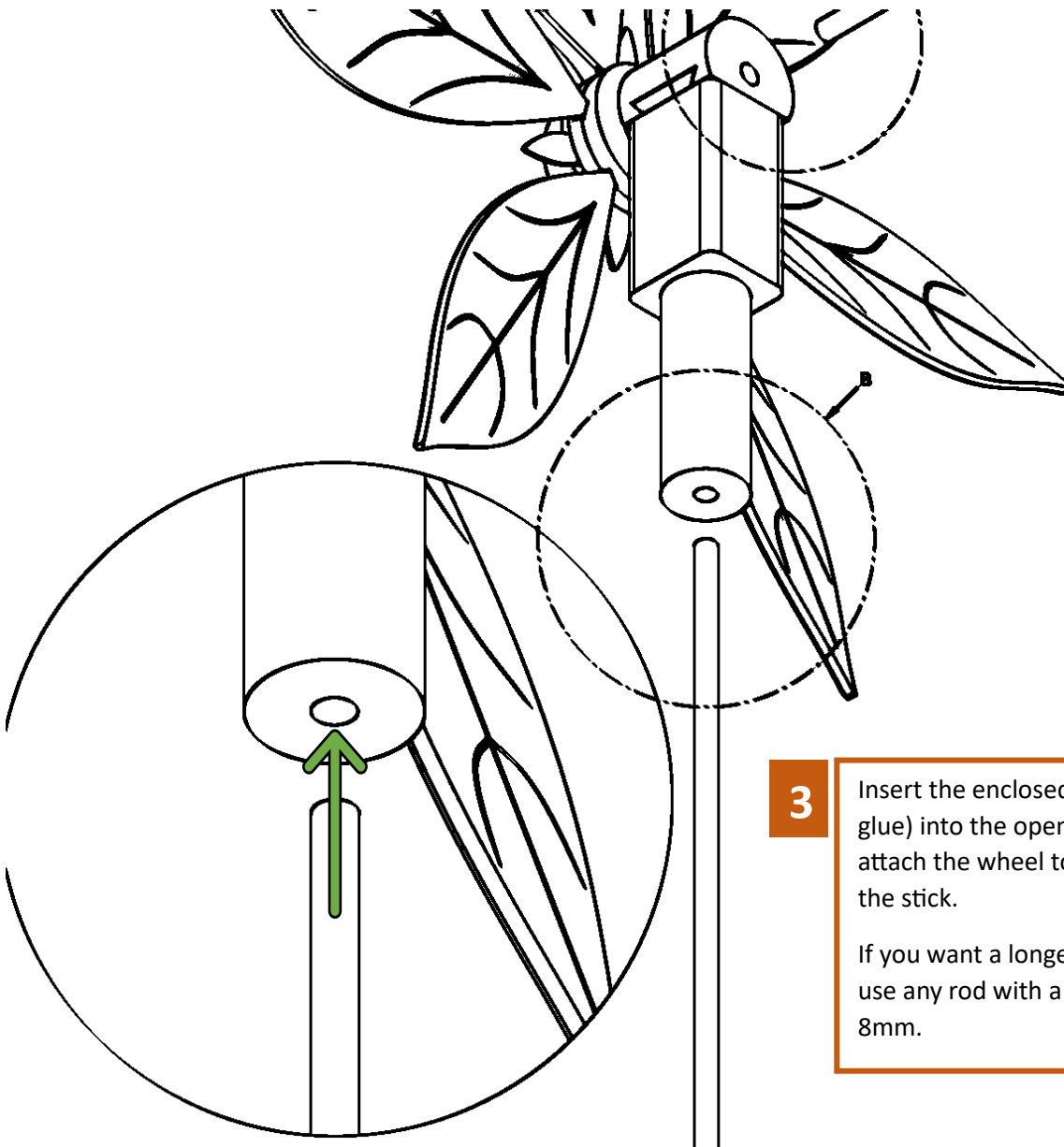


## Step 2

Insert the enclosed wooden rod into the hole of the visible ball bearing from below, as described in the drawing, without glue. Please push the rod all the way to the limit. In the upper area there is (not visible) a ball bearing.

You can also use your own instead of the enclosed stick. Note that the diameter must not be larger than 8mm.

That's it. Have a lot of fun.



**3**

Insert the enclosed rod (without glue) into the opening. You can now attach the wheel to the ground with the stick.

If you want a longer rod, you can use any rod with a diameter of 8mm.